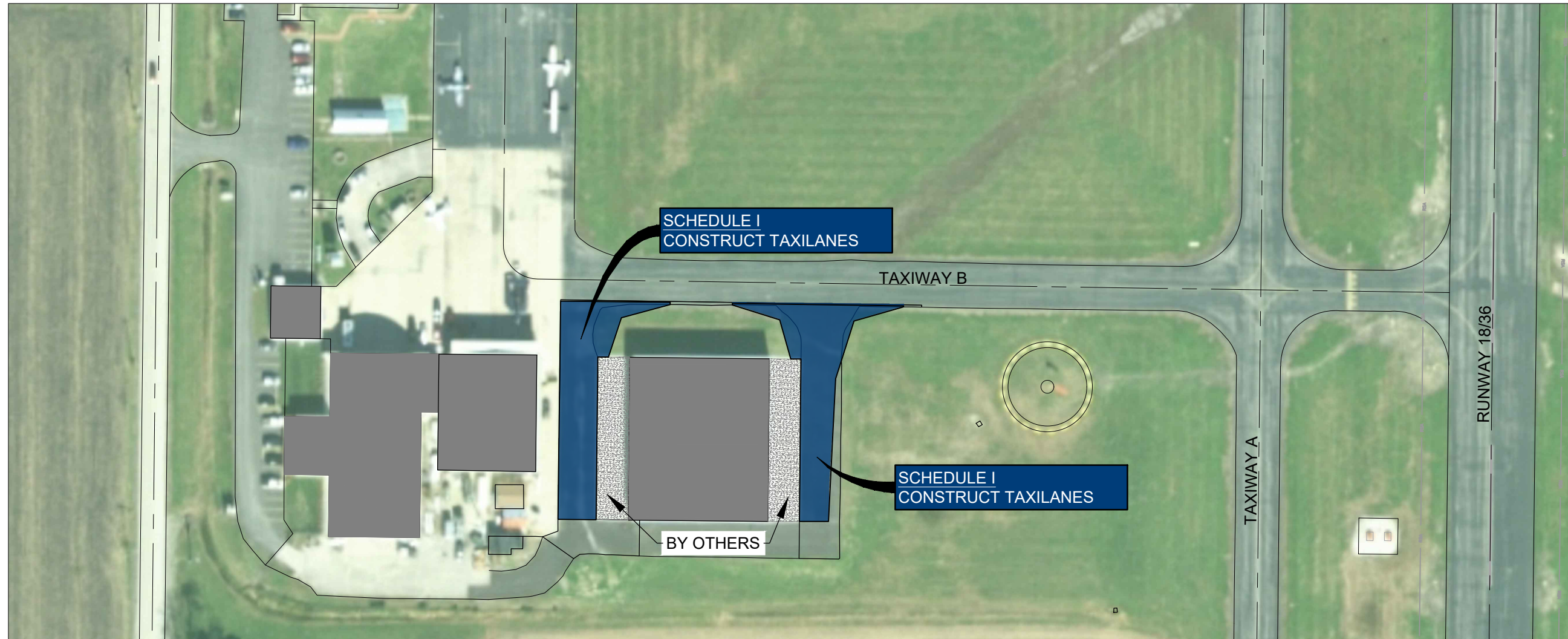
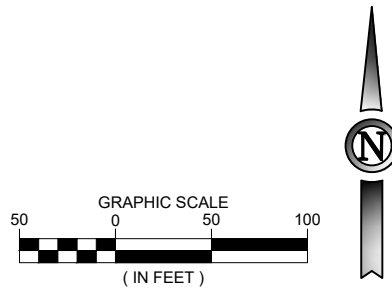
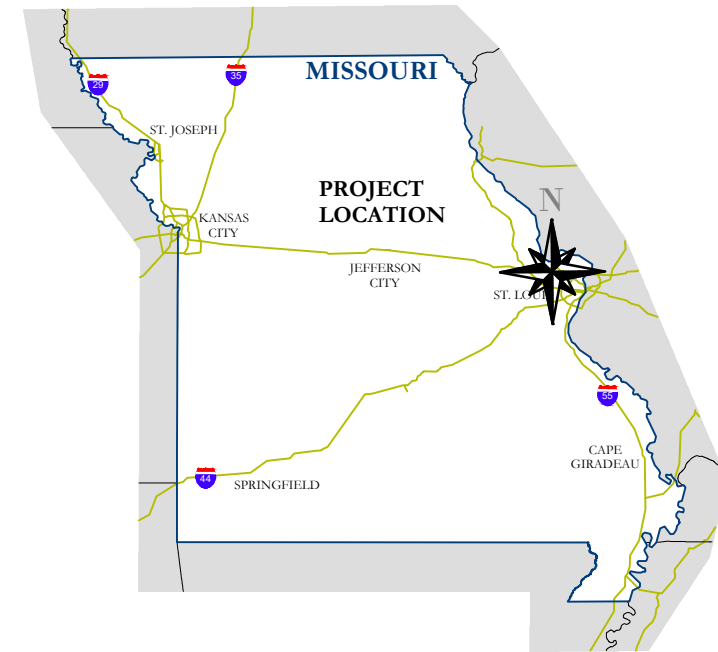


CONSTRUCTION PLANS FOR IMPROVEMENTS TO ST. CHARLES COUNTY REGIONAL AIRPORT - SMARTT FIELD

PORTAGE DES SIOUX, MISSOURI
MoDOT PROJECT NO. 21-111A-2

• SCHEDULE I •
CONSTRUCT TAXILANES



JVIATION
A WOOLPERT COMPANY

931 Wildwood Drive
Suite 101
Jefferson City, Missouri 65109

Phone: 573.636.3200
Fax: 573.636.3201
jviation.com

SPONSORED BY

- ST. CHARLES COUNTY
- MODOT AVIATION
- FEDERAL AVIATION ADMINISTRATION

PREPARED FOR:
ST. CHARLES COUNTY REGIONAL AIRPORT -
SMARTT FIELD
6390 GRAFTON FERRY ROAD
PORTAGE DES SIOUX, MO 63373

ISSUED FOR BID

THESE DRAWINGS ARE FOR BIDDING PURPOSES ONLY. THEY WERE PREPARED BY OR UNDER THE SUPERVISION OF:

LAURA K. KOONCE 2022012014 12/02/2022
NAME REG. NO. DATE
FOR AND ON BEHALF OF JVIATION, INC.

Printed December 2, 2022 @ 2:36 PM by: Reginal, Laura
S:\SET\1723 - Taxilanes\CD\PLANS\000-SET-1723-001-COVER.dwg

		DES: A.A.B.	ISSUE RECORD				CONSTRUCT TAXILANES	COVER SHEET		SHEET NAME
		DR: T.N.B	NO.	BY	DATE	DESCRIPTION				G001
		CH: C.L.G.	1	L.K.K.	12/02/2022	ISSUED FOR BID - REBID			SHEET NO.	
		APP: L.K.K.							1 of 32	
	REGIONAL AIRPORT - SMARTT FIELD						MODOT PROJ. NO. 21-111A-2	JVIATION PROJ. NO. 2017-SET-03		